

Smart Information for a Sustainable World



ArcFM™ Server Telvent Energy

Flexible Web Environment for ArcFM Solution

Today's utility information technology (IT) environment requires solutions that can support multi-disciplinary requests and be available in distributed locations. Telvent's ArcFM™ Server provides the key components for addressing these IT requirements for electric, gas, water, wastewater and telecom utilities.

Complements ArcFM Solution, Extends ArcGIS Server

ArcFM Server allows your organization to deploy spatially-aware applications, with data managed by the ArcFM Solution, over the web in a familiar environment. ArcFM Server consists of the following:

- **ArcFM Server Web Services** – foundational for supporting a service-oriented architecture (SOA) Across the enterprise. It provides server extensions for key ArcFM functionality as well as access to ArcFM's framework of editing and business rule enforcement objects, including ArcFM Properties, ArcFM AutoUpdaters, and ArcFM Model Names.
- **ArcFM Server Silverlight SDK** – a rich set of development tools that allows a developer to extend the viewing functionality of Esri's ArcGIS API Microsoft Silverlight/WPF.
- **ArcFM Server Silverlight Sample page** – a sample application that shows some of the options available in the

SDK. We give you code to build your Silverlight page tailored for your users.

- **ArcFM Solution Resource Center** – provides downloads for the latest version of the SDK. It also allows you to try out specific Silverlight functionality (e.g., traces) using a sample map, and then download the C# and XAML code necessary to add that tool to your custom ArcFM Server web application.

More Data Available to More People

ArcFM Server web services enables GIS information to be accessed across multiple departments within an organization by both traditional GIS clients and non-traditional clients in a variety of environments, including enterprise systems integrations via REST.

ArcFM Server Web Services

All tracing results are available in the Attribute Viewer or are displayed on the map, where the user can define a buffer to highlight results:

- **Electric Traces** allows users to trace electric distribution systems – upstream or downstream – and optionally return protective devices.
- **Gas Traces** allows the user to display connected natural gas features in the distribution system as well as trace pressure systems and cathodic protection systems and identify valves and squeeze-off points for the emergency isolation.

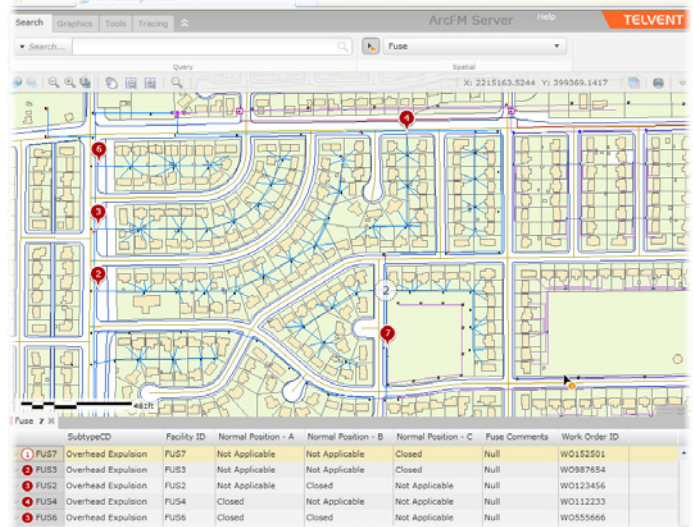
TELVENT
is part of

Schneider
Electric

- **Water Traces** offers a variety of water distribution tracing capabilities such as the ability to trace a pressure system, cathodic protection system and distribution system.
- **Locate** offers the ability to search features or tables by their attribute values or related tables.
- **Display Namer** returns the ArcFM name of the feature, which might be the primary display field or a custom display namer.

ArcFM Server SDK provides the following functionality:

- **Identify Tool** allows users to click a portion of the map and display information about the features at that location. Users can identify on visible layers, all layers, or individual features in the map.
- **ArcFM Locator tool** is a feature-finding tool that can be configured by the GIS Administrator to create utility specific searches for the end users. The results of the search are highlighted in the map and displayed in the ArcFM Attribute Viewer.
- **Attribute Viewer** displays data fields in an easy-to-use tabular layout, featuring drag-and-drop columns and field sorting capabilities for features returned by a task or command. The Attribute Viewer displays the attribute fields with respect to the order and visibility properties configured in the ArcFM geodatabase.
 - The Attribute Viewer also allows users to export search results to Microsoft Excel spreadsheets, for easily sharing information or generating reports.
 - The Attribute Viewer shows related data, either from related tables, or custom relationships provided from custom web services.
- **Redlining** allows you to create and publish markups on the map. The markups can be saved locally, emailed to co-workers or saved to a public database. Markup features can be text, points, lines or polygons, using any symbol supported by ArcGIS Server.



Feature search with results. Attribute viewer has active link between data rows and features on the map.

ArcFM Server Sample Page provides sample implementations of the following:

- **Client-side printing** in addition to the server-side printing traditionally available, ArcFM Server has client-side printing functionality. Using templates created in Silverlight, client-side printing allows your users to print ad-hoc maps. The map in the template is live and can be adjusted by zooming or panning to the correct extent.
- **Measure Tools** allow you to measure area, distance, and radius in many commonly used units.
- **Coordinates Control** allows you to click and retrieve coordinates from the map in latitude and longitude or the projection of the map.

TELVENT
is part of

Schneider
Electric

Our evolution to Schneider Electric, the global specialist in energy management, re-affirms our commitment to provide you with innovative solutions, best-in-class customer service, and exceptional quality in everything we do. We are proud to be your partner, and we are dedicated to helping you make the most of your energy.

www.telvent.com/smartgrid 1.866.537.1091

©2011 Telvent is a trademark and the property of Telvent. All rights reserved. All other trademarks are the properties of their respective owners.

Rev 0811